

B-4S

Gate magnetic contact

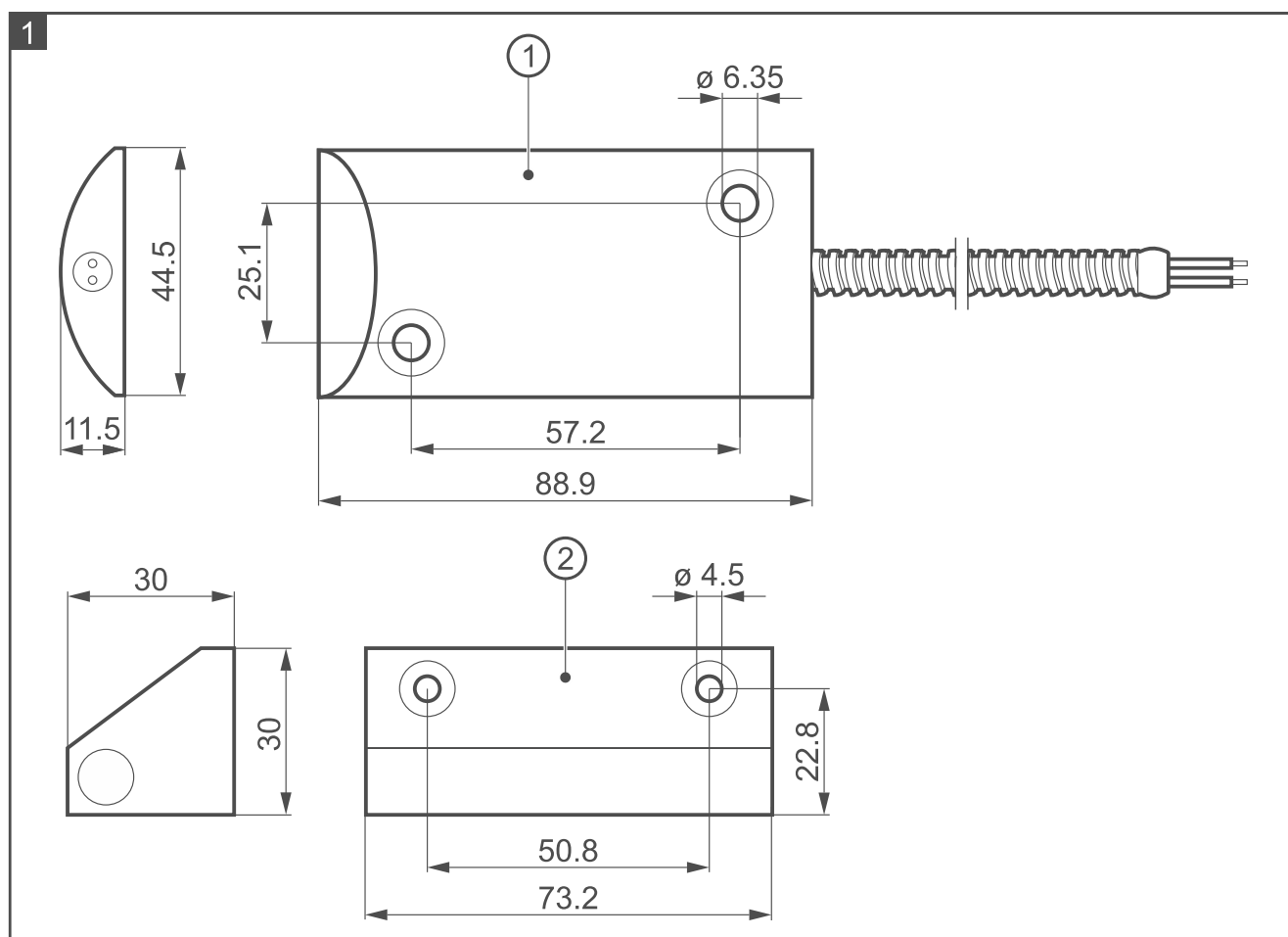
b4S_en 09/25

The B-4S magnetic contact is used to detect the opening of a garage door, etc. It is designed for surface mounting.

1. Description

The B-4S magnetic contact consists of a reed switch and a magnet (Fig. 1). Moving the magnet away from the reed switch (by opening the gate) opens the reed switch contacts.

The reed switch and the magnet are placed in rugged, hermetic, metal (aluminum) enclosures. The reed switch has wires run directly from its enclosure. The wires are protected by a metal cover.



① reed switch

② magnet

2. Tips for installation



Disconnect power before making any electrical connections.

- The magnetic contact should be installed indoors, in spaces with normal air humidity.

- Install the reed switch on the ground / floor (fixed surface).
- Install the magnet on the door / gate (moving surface).
- Do not install the magnetic contact on ferromagnetic surfaces or in the vicinity of strong magnetic or electric fields.



The magnetic contact should not be installed in places with a high risk of corrosion, including electrochemical corrosion.

3. Specifications

Magnetic contact type	NC
Maximum switching voltage	100 V
Maximum switching current.....	0.4 A
Maximum contact rating	7.5 W
Maximum contact resistance.....	0.15 Ω
Make distance	75 mm
Break distance	82 mm
Operating temperature range.....	-10...+55°C
Maximum humidity	93±3%
Environmental class according to EN50130-5	II
Reed switch enclosure dimensions.....	88.9 x 44.5 x 11.5 mm
Magnet enclosure dimensions	73.2 x 30 x 30 mm
Length of wires.....	800 mm
Length of wire cover.....	550 mm
Weight.....	270 g

The declaration of conformity may be consulted at www.satel.pl/ce